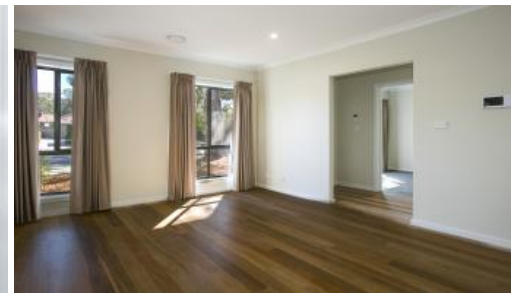




38 Charteris Crescent, Chifley



Modern with Plenty of Living Space

Well- designed and built three bedroom ensuite home with all the creature comforts and space you could require. A short walk to Woden Town Centre and easy drive to the City.

Features include:

- Three bedrooms, all with built- in robes
- Large master bedroom with ensuite and walk- in robe
- Lounge room plus family room and meals area off kitchen
- Quality Chef's kitchen with Caesar Stone benchtops, dishwasher and plenty of storage space
- Alarm system
- Ducted reverse cycle heating
- Alfresco area for entertaining
- Double garage with remote control plus storage/ work bench area
- Separate powder room
- Large laundry with plenty of storage
- Instant hot water unit

Available 15th January 2021

An EER does not exist for this property

3 2

Price	\$790 per week
Property Type	Rental
Property ID	300

Agent Details

Danielle Coady - 02 6190 1500

Office Details

Conder
PO Box 6277 Conder ACT 2906
Australia
0401 086 400



The tenant requires the lessor's consent in writing to keep a pet at the premises.

The tenant requires the lessor's consent in writing to make modifications to the property.

A carpet cleaning clause and no smoking inside clause is applicable to the lease

To view the property click the 'Book Inspection' button to register for an available appointment.

COVID 19 Procedures for Property Inspections

To protect our staff, families and you, we ask that prospective tenants inspecting properties:

- Do not attend if you have returned from overseas or interstate in the last 14 days or have been in contact with an infected person
- Do not attend if you are required to be self- isolating
- Do not attend if you have a fever, cough or generally feeling unwell
- Do not shake hands
- Maintain a minimum 1.5m distance from other attendees and the agent
- Do not touch surfaces at the property as the virus can remain alive on them for quite some time. The agent will make sure all lights are on and doors open
- Use hand sanitizer
- Follow the instructions of the Property Manager at the inspection

The above information provided has been furnished to us by the vendor/s. We have not verified whether or not that information is accurate and do not have any belief in one way or the other in its accuracy. We do not accept any responsibility to any person for its accuracy and do no more than pass it on. All interested parties should make and rely upon their own inquiries in order to determine whether or not this information is in fact accurate.